

Centrifugal pump

■ Summary

● The pumps is designed for pumping drilling fluid or industrial suspension (slurry), the use of advanced design theory can be pumping abrasive, liquid viscosity (resistance) and corrosion. Compared with an ordinary pump, excellent flow, high temperature, long life, easy maintenance, high reliability, significant energy saving effect and so on, now widely used around the world on land and offshore drilling. We will provide users with the best products to meet the needs of the different working conditions.

■ Applications

● Drilling applications:

Mud mixing and shearing operations, desanding and delisting, degassing, supercharging, centrifugal feed, mud cooling towers, and wash down.

● Others

Chemical, petroleum (refining), industrial, construction and agricultural applications.

■ Working conditions

(Outlet): DN=2"~6" (Flow) : Q=20~400m³/h

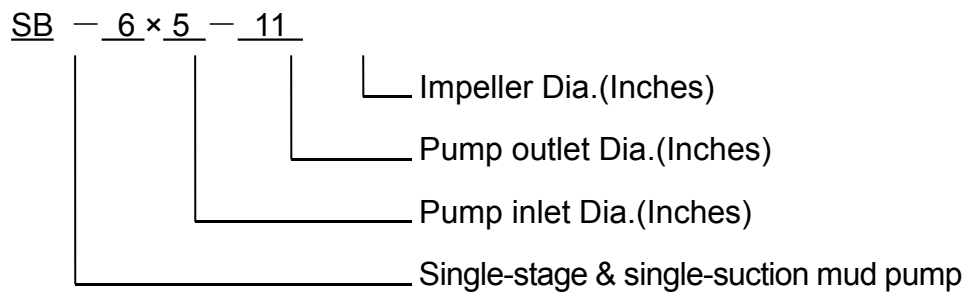
(Head) : H=12~62m

(Working temperature): T=-40°C~60°C

Please contact with us to meet you various demands.



■ Explanation of model





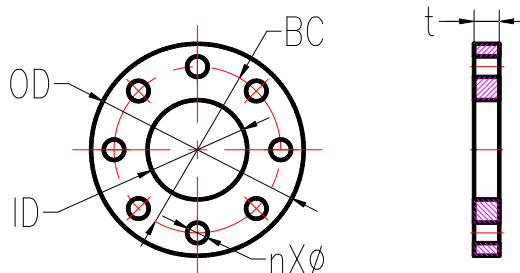
■ Centrifugal pump parameters Form1

Model	Capacity	Head	Efficiency	Speed	[NPSH]	Power	
	(m ³ /h)	(m)	(%)	(rpm)	r(m)	Shaft (KW)	Motor (KW)
SB8×6×14	320	40	65	1480	4.0	53.63	75
SB8×6×13	290	33	64	1480	4.5	40.7	55
SB8×6×12	270	28	64	1480	4.5	32	45
SB6×5×14	200	40	62	1480	3.2	35.1	55
SB6×5×13	180	34	60	1480	3.0	27.8	45
SB6×5×12	160	30	60	1470	3.0	22	30
SB6×5×11	200	21	62	1470	2.5	18.5	30
SB6×5×9	160	12	58	1460	3.0	9.02	15
SB5×4×14	120	40	56	1460	4.6	23.3	37
SB5×4×13	90	40	56	1460	4.5	17.5	30
SB5×4×12	90	30	56	1460	4.5	13.1	22
SB5×4×11	90	24	56	1460	4.5	10.5	18.5
SB5×4×10	85	20	56	1460	4.2	8.4	15
SB5×4×9	80	19.5	54	1460	4.5	7.9	15
SB4×3×13	50	40	48	1460	4.5	11.3	18.5
SB4×3×12	45	30	47	1460	4	7.8	15
SB4×3×11	45	24	46	1460	4	6.4	11
SB3×2×13	25	35	40	1460	3	5.9	11
SB3×2×12	23	29	39	1450	3	5.1	7.5
SB3×2×11	20	23	39	1440	3	3.2	5.5

(60Hz)

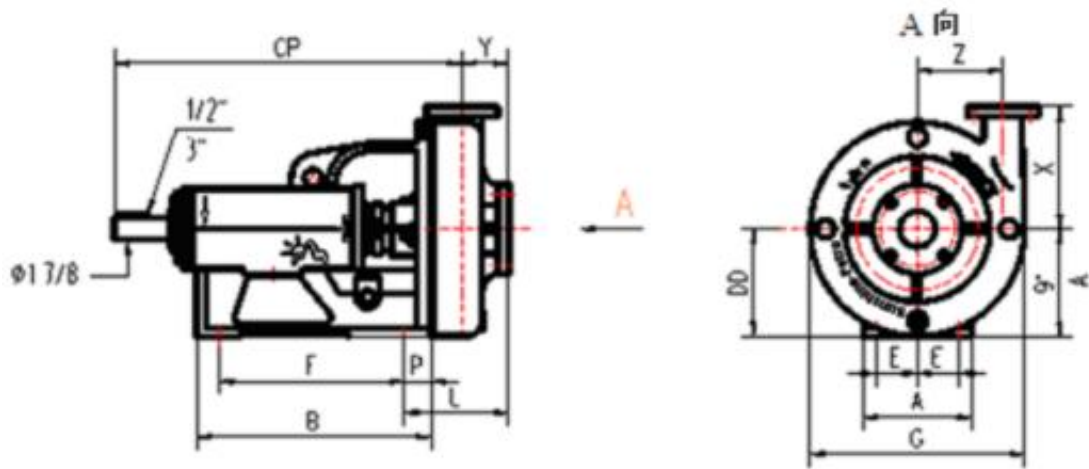
型号 Model	流量 Capacity	扬程 Head	效率 Efficiency	转速 Speed	汽蚀余量 [NPSH]	功率 Power	
	(m ³ /h)	(m)	(%)	(rpm)	r(m)	轴功率 Shaft (KW)	电机 Motor (KW)
SB8×6×12	335	43	66	1750	4.8	59.5	75
SB6×5×14	248	48	61	1750	3.0	63.7	75
SB6×5×13	220	51	61	1750	3.0	50.1	75
SB6×5×12	196	48	61	1750	3.0	42	55
SB6×5×11	250	32	63	1750	2.7	34.6	55
SB6×5×9	195	18	60	1750	3.2	15.9	22
SB5×4×14	149	61	58	1750	4.6	42.7	45
SB5×4×13	111	60	57	1750	4.6	31.8	45
SB5×4×12	112	45	58	1750	4.6	23.7	30
SB5×4×11	112	37	57	1750	4.6	19.8	30
SB5×4×10	105	30	57	1750	4.2	15.1	22
SB5×4×9	99	30	55	1750	4.5	14.7	22
SB4x3x13	113	45	55	1750	4.5	16.6	30
SB4×3×13	62	61	50	1750	4.5	16.6	22
SB4×3×12	55	46	48	1750	4	14.4	18.5
SB4×3×11	54	35	47	1750	4	10.9	15
SB3×2×13	31	52	40	1750	3.1	11	15
SB3×2×12	28	45	40	1750	3.1	8.6	11
SB3×2×11	25	35	41	1750	3.1	5.8	7.5

■ Pump head dimensions



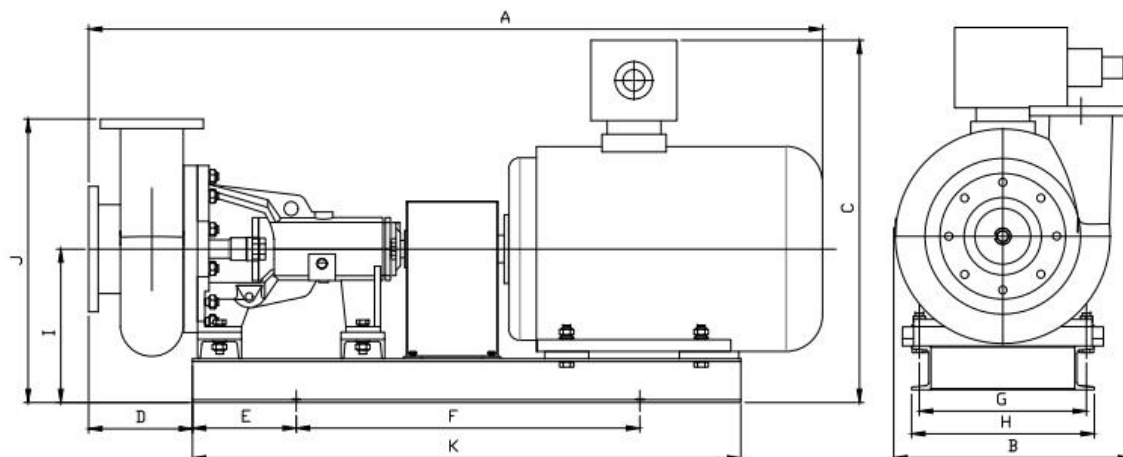
泵头法兰尺寸表

Size	ID	OD	BC (Imperial)	BC (Metric)	Thicknesst	Hole n	Hole Dia. φ
(Inch)	(mm)	(mm)	(mm)	(mm)	(mm)		(mm)
2	50.8	152.4	120.7	125	16	4	19
3	76.2	190.5	152.4	160	19	4	19
4	101.6	228.6	190.5	180	24	8	19
5	127	254	215.9	210	24	8	22.2
6	152.4	280	241.3	240	25	8	22.2
8	203.2	343	298	295	28.5	8	22.2
10	254	330	362	350	30	12	25.4



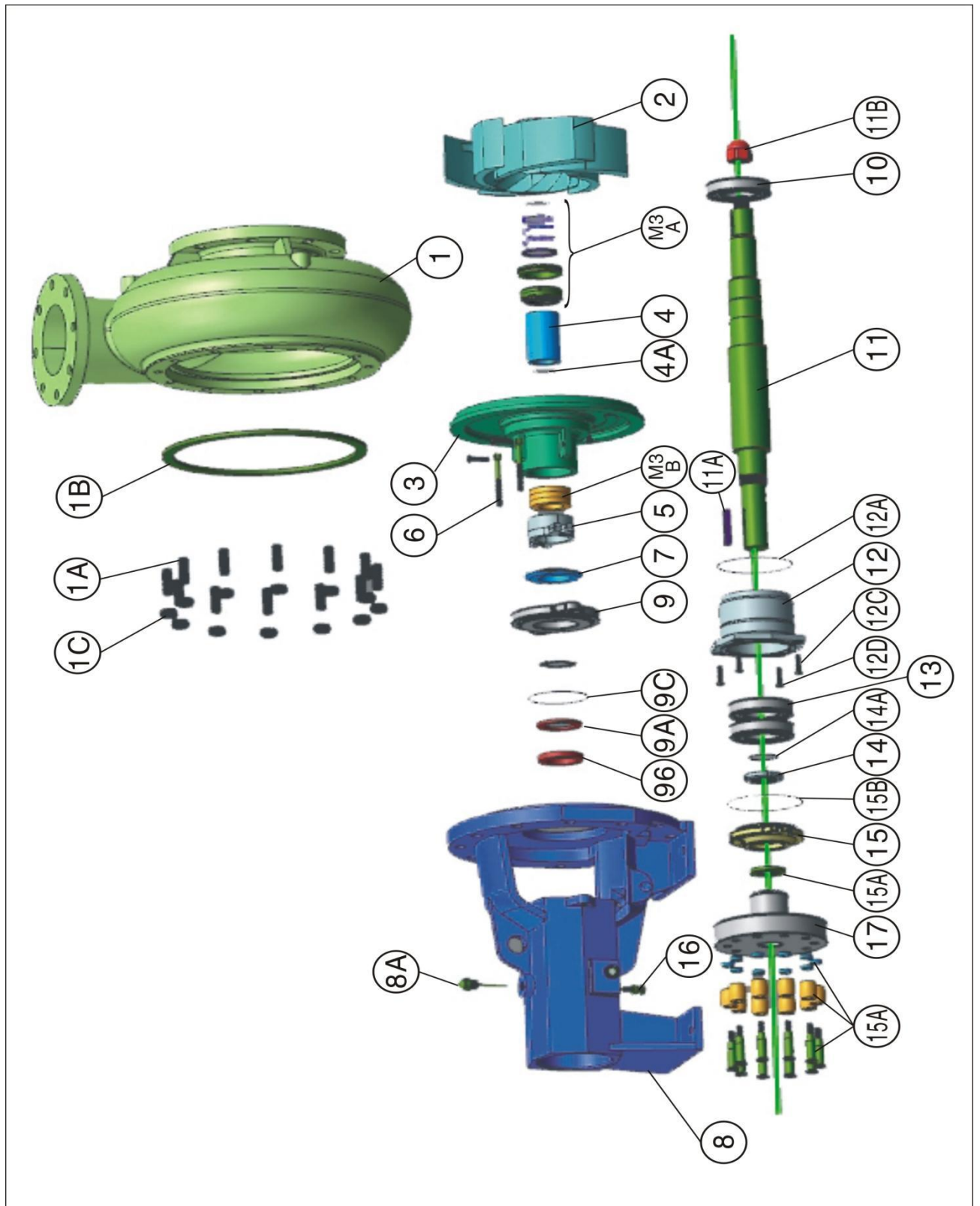
Pump model	A (mm)	B (mm)	E (mm)	F (mm)	G (mm)	L (mm)	P (mm)	X (mm)	Y (mm)	Z (mm)	CP (mm)	DD (mm)	Weight (Kg)
3x2x13	229	500	89	392	457	220	60	260	95	178	741	227	200
4x3x13	229	500	89	392	457	245	60	260	108	172	753	227	200
6x5x11	229	500	89	392	457	312	54	280	146	152	783	227	230
6x5x14	229	500	89	392	457	312	54	280	146	152	783	227	250
8x6x12	294	500	89	392	587	358	60	356	173	214	801	227	275
8x6x14	294	500	89	392	587	358	60	356	173	214	801	227	280

■ Pump dimensions



Pump model	Power	A mm	B mm	C mm	D mm	E mm	F mm	G mm	H mm	I mm	J mm	K mm
SB8×6×14	75Kw	2008	650	991	284	284	940	457	500	420	776	1500
SB8×6×13	55Kw	1923	650	992	298	151	1085	406	450	382	738	1400
SB8×6×12	45Kw	1866	650	825	298	118	1085	360	400	360	722	1326
SB6×5×14	55Kw	1912	580	922	252	151	1085	406	450	382	662	1400
SB6×5×13	45Kw	1821	518	825	252	118	1085	360	400	360	640	1326
SB6×5×11	37Kw	1785	518	825	252	54	1085	356	400	360	640	1230
SB6×5×11	30Kw	1799	518	779	252	167	1020	318	360	359	639	1266
SB6×5×11	22Kw	1699	506	729	252	230	800	179	325	359	639	1300
SB6×5×9	15Kw	1648	506	719	252	179	800	290	330	359	639	1190
SB5×4×14	37Kw	1750	567	825	217	54	1085	356	400	360	680	1300
SB5×4×13	30Kw	1734	567	779	217	167	1020	318	360	360	680	1266
SB5×4×12	22Kw	1664	567	729	217	230	800	279	325	360	680	1230
SB5×4×11	18.5Kw	1639	567	764	217	230	800	285	325	359	680	1190
SB5×4×9	15Kw	1613	567	719	217	179	800	290	330	359	680	1190
SB4×3×13	18.5w	1607	500	764	185	230	800	285	325	359	619	1190
SB4×3×12	15Kw	1581	500	719	185	179	800	290	330	360	619	1190
SB4×3×11	11Kw	1525	500	752	185	181	800	290	330	360	619	1142
SB3×2×13	11Kw	1500	492	752	160	181	800	290	330	359	619	1142
SB3×2×12	7.5Kw	1403	489	677	160	161	800	274	314	359	619	1070
SB3×2×11	5.5Kw	1359	489	677	160	161	760	274	314	359	619	1030

■ Pump structure and components



■ Pump parts list

新图代号	数量	名 称
1	1	泵体 Housing
1B	2	纸垫 Gasket, housing
1A	12	螺柱 Stud, housing
1C	12	螺母 Nut, housing
2	1	叶轮 Impeller
3	1	机封泵盖 Stuffing box-mechanical seal
M3A	1	机械密封组件 Mechanical seal assembly
M3B	1	辅助密封 Back-Up packing
4	1	轴套 Shaft sleeve
4A	1	轴套密封圈 Seal, shaft sleeve
5	1	填料压盖 Packing gland
6	2	填料压盖螺栓组件 Gland bolt assembly
7	1	挡水圈 Deflector
8	1	托架 Pedestal
9	1	内轴承盖 Cover, inboard bearing
9A	1	内轴承防尘密封 Seal, inboard bearing exclusion
9B	1	内轴承盖密封圈（油封） Seal, inboard bearing cover
9C	1	内轴承盖密封圈 Within the bearing cap seals
10	1	内轴承 Bearing inboard
11	1	轴 Shaft
11A	1	键 Key, shaft
11B	1	叶轮螺母 Impeller nut
12	1	外轴承座 Housing, outboard bearing
12A	1	外轴承座密封圈 Seal, outboard bearing housing
12D	2	外轴承座调节螺栓 Bolt, adjustment, outboard brng. HSG.
12C	2	外轴承座紧固螺栓 Outer bearing fastening bolts
13	2	外轴承 Bearing, outboard
14	1	轴承螺母 Nut, bearing
14A	1	轴承螺母锁紧垫圈 Lock washer, bearing nut
15	1	外轴承盖 Cover, outboard bearing
15A	1	外轴承盖轴端密封圈（油封） Seal, shaft, outboard bearing cover
15B	1	外轴承盖密封圈 Seal, outboard bearing cover
8A	1	呼吸器 Breather
16	1	放油螺塞 Oil drain plug
17	1	联轴器 Coupling
17A	10	联轴器柱销 Coupling Pin

■ Pump pictures





XI' AN HL PETROLEUM EQUIPMENT CO., LTD

ADD: No.804, 1st Building, Phase 2 of Western Cloud Valley, Xi
Xian New District, Xi'an City, Shaanxi Province, China

TEL: 029-88680837

FAX: 029-88680975

E-mail: sales@hlsolidscontrol.com

Web:www.hlsolidscontrol.com